

SUPPORT FOR DYSLEXIA

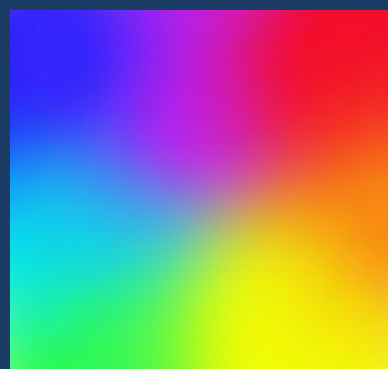
Strategies to support in making remote learning a dyslexic-friendly experience.

USE ROUNDED FONT

Use fonts which are rounded and reflect cursive script such as; Century Gothic, Arial, Verdana, Tahoma, Comic Sans - with minimum font size of 12/14.



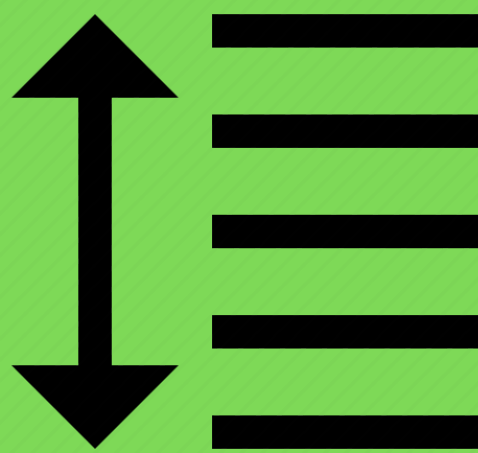
BACKGROUND COLOURS ON DOCUMENTS



Change Word Processing and Presentations document backgrounds to cream colours, off-white or pastel coloured instead of white.

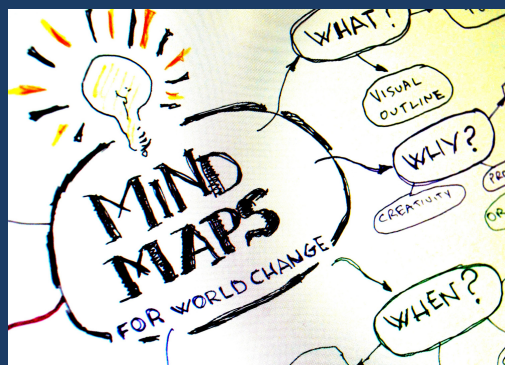
INCREASE SPACE BETWEEN LINES

Double line spacing and a line between paragraphs makes text easier to read.



PRESENTATION OF WORK

To make your work easier to read back, present it as concisely as possible using bullet points and images, do not overcrowd the page.



Follow @Cedars_Upper



FURTHER SUPPORT FOR DYSLEXIA

Strategies to support in making remote learning a dyslexic-friendly experience.

GOOGLE ACCESSIBILITY

Increase the size of all items on a website using CTRL and + to increase (and CTRL and - to decrease)



HIGH CONTRAST

Add a Google Chrome extension such as 'High Contrast' and use SHIFT + F12 to turn high contrast mode on/off.

USE VOICE NOTES

Add a Google Chrome extension such as Mote to leave voice messages in Google Classroom and within documents, rather than type responses.



TIMING

Remember, if you were in school each lesson would be one hour and then it would end. Work the allotted time and please don't feel the need to complete everything.

